

Valves for district heating and cooling

District heating and cooling –
Expertise in demanding applications



The right selection for your district heating and cooling processes

Stages	Media	Pressure range	Temperature range	Abrasion	Corrosion	Valve
Heat generation	Hot water	2-16 bar	70-120°C	Low	Low	Desponia® with stainless disc and EPDM HT liner
	Steam	2-20 bar	150-300°C	Low	Low	Elara with carbon steel body and metal seat
	Geothermal fluids	10-50 bar	100-250°C	Moderate	High	Elara with stainless steel body and metal seat or stainless steel ball valves
	Combustion fuel	2-10 bar	Ambient	Low	Low	Ball valves or Desponia® with stainless steel disc and NBR liner
Heat distribution	Hot water	2-16 bar	70-120°C	Low	Low	Desponia® with stainless steel disc and EPDM HT liner
	Steam	2-20 bar	150-300°C	Low	Low	Elara with carbon steel body and metal seat
Heat exchange	Hot water	2-16 bar	70-120°C	Low	Low	Desponia® with stainless steel disc and EPDM HT liner
	Steam	2-20 bar	150-300°C	Low	Low	Elara with carbon steel body and metal seat
	Domestic hot water	1-3 bar	40-80°C	Low	Low	Desponia® with stainless steel disc and EPDM HT liner
Cooling generation	Chilled water	2-10 bar	4-7°C	Low	Low	Desponia® with stainless steel disc and EPDM liner
	Refrigerant	60-600 mbarA	Ambient	Low	Moderate	Desponia® with stainless steel disc and EPDM liner/ Desponia® plus with bonded liner for vacuum < 200 mbarA
	Natural cold water	1-3 bar	4-10°C	Low	Moderate	Desponia® with stainless steel disc and EPDM liner
Cooling distribution	Chilled water	2-10 bar	4-7°C	Low	Low	Desponia® with stainless steel disc and EPDM liner
	Returning water	2-8 bar	12-18°C	Low	Low	Desponia® with stainless steel disc and EPDM liner
Cooling exchange	Chilled water	2-10 bar	4-7°C	Low	Low	Desponia® with stainless steel disc and EPDM liner
	Returning water	2-8 bar	12-18°C	Low	Low	Desponia® with stainless steel disc and EPDM liner
	Domestic cold water	1-3 bar	7-18°C	Low	Low	Desponia® with stainless steel disc and EPDM liner

Desponia®

Elastomer-lined butterfly valve



Body construction	Wafer, Lug, U-Section
Nominal diameter	DN 25–1600 (1"–64")
Max. working pressure	Up to 16 bar
Flange connection	PN6, PN10, PN16, ANSI cl. 150, JIS, AS, AWWA, etc.
Temperature range	-20°C to 200°C
Body material	Ductile iron
Disc material	Stainless steel
Liner material	EPDM, EPDM HT, NBR
Special executions	Bonded liner for vacuum

Elara

Double eccentric butterfly valve



Body construction	Wafer, Lug
Nominal diameter	DN 50–600 (2"–24")
Max. working pressure	Up to 50 bar
Flange connection	PN10, PN16, PN25, PN40, ANSI cl. 150/300
Temperature range	-50°C* to 400°C
Body material	Carbon steel, Stainless steel
Disc material	Stainless steel
Seat material	MPTFE and Metal

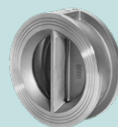
3

Other products



Rhea

Swing check valve, DN 32-600, available in various executions.



Neptunia

Dual plate check valve, DN 50-600, Ductile iron and Stainless steel.



Ball valves

2- way valves in stainless steel, available with 2- or 3-piece body.



Actuators and accessories

Actuators and a large range of accessories are available to complete the system.

We are there for you. Anywhere, anytime.

As an international company with extensive product and project expertise, we support you with our sales partners and our technical support team in all parts of the world.

