

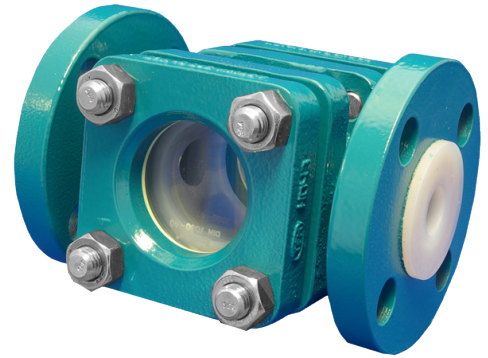
BESG - Bulls Eye Sightglass

Description

The BESG Bulls Eye Sightglass has a full bore viewing area through two borosilicate glass windows fitted 180 degrees apart. Lined in PFA ensuring high corrosion resistance. The product is available for both standard PN 10/16 and ANSI 150.

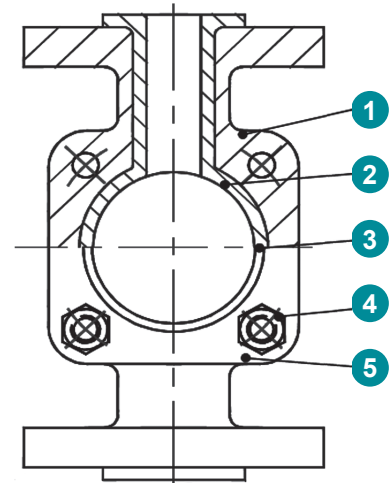
Product features

- PFA fluoropolymer lining and borosilicate glass for the most demanding chemical and thermal applications
- Full port design for maximum flow with minimal pressure drops
- Dual windows ensure clear viewing from both sides
- Heavy wall PFA liners provide the highest levels of performance. Operating from full vacuum to 19 bar at 200°C - higher than for tubular sight glasses

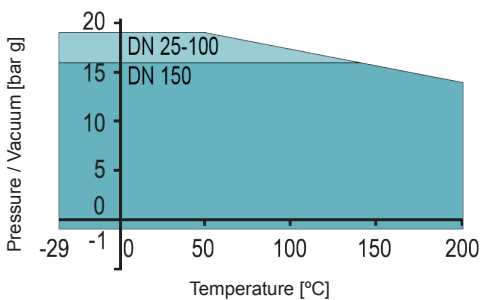


Material specification

Item	Qty	Description	Materials	Specification	DIN equivalent material
1	1	Body	Carbon steel / PFA	ASTM A216 Gr WCB / PFA	1.0619 /PFA
2	2	Glass window	Borosilicate Glass 3.3	DIN 7080	DIN 7080
3	2	Gasket	Non asbestos fibre		
4	4/8	Fasteners	Stainless steel	BS970 Pt 1 Gr 304S15	1.4301
5	2	Window flange	Carbon steel / PFA	ASTM A216 Gr WCB / PFA	1.0619 /PFA
		Paint finish	75 µm, RAL 5021	Epoxy coating	-
		PFA lining	ASTM D 3307		

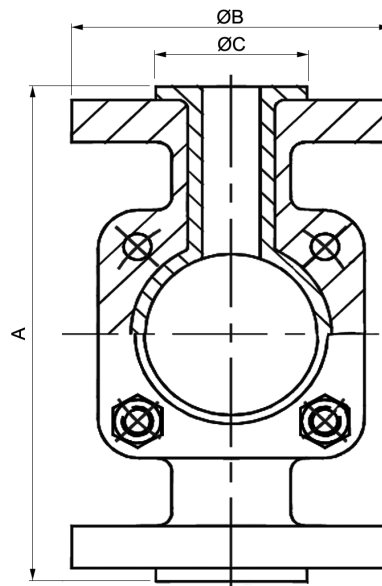


Pressure / Temperature Diagram



Dimensions

To suit pipework		Face to face	Flange diameter	Sealing diameter	Glass	Weight
ANSI 150 Piping systems						
Inches	mm	A	B	C	Thickness	kg
1	25	152	108	51	15	4.3
1½	40	178	127	73	15	6.7
2	50	203	152	92	20	10.2
3	80	241	190	127	30	17.5
4	100	292	229	157	30	28.0
6	150	356	279	216	30	61.0
PN 10/16 Piping systems						
Inches	mm	A	B	C	Thickness	kg
1	25	160	115	68	15	5.0
1½	40	200	150	88	15	9.0
2	50	230	165	102	20	12.8
3	80	310	190	138	30	20.0
4	100	350	229	162	30	29.0
6	150	480	279	218	30	60.5



Options

Component	Description
Liner	Antistatic
Extras	Viewing lamp
Body	Flow disturbers and indicators, drip lip
Windows	PFA / FEP lining for glass windows

Type code

BESG	050	.	3	3	-	3HT	-	xx
①	②		③	④		⑤		⑥

①	Type	BESG	Bulls Eye Sightglass
②	Nominal diameter	025 - 150	mm
③	Working pressure	3	16 bar
④	Rating	3	PN 10/16
		A	ANSI 150
⑤	Body	3HT	Carbon Steel / PFA (standard)
			Antistatic execution on request
⑥	Options	xx	Viewing lamp Flow disturbers and indicators, drip lip PFA / FEP lining for glass windows