

CTSG - Tubular sight glass

Description

The CTSG Sight glasses unique construction provides full 360° process viewing. Manufactured from heavy wall borosilicate glass tube and PFA moulded flanges for use in the most demanding corrosive and toxic applications. The product is available for both standard DIN PN 10/16 and ANSI 150.

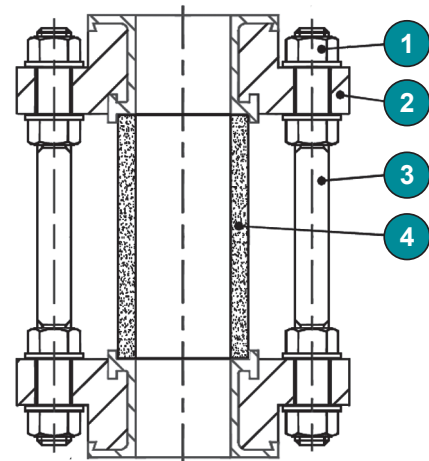
Product features

- Heat treated heavy wall borosilicate glass for managing high line pressures
- Parallel full port flow path prevents liquid retention or bug traps
- Stainless steel tie rods provide protection against side loads and mechanical damage
- Proven design offering safety and security
- PFA lined for the most corrosive duties

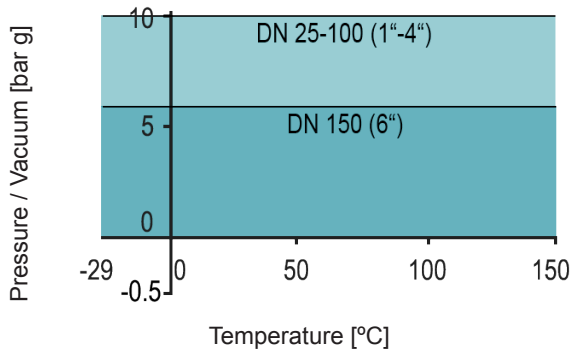


Material specification

Item	Qty	Description	Materials	Specification	DIN equivalent material
1	16/32/48	Nut + Washers	Stainless steel	ASTM F594 Gr 304	DIN A2
2	2	Flange	Carbon Steel / PFA	BS 1501-161-430A /PFA	1.0486 / PFA
3	4/8/12	Tie Rods	Stainless steel	BS970 Pt.1 Gr 303S42	1.4305
4	1	Glass Tube	Borosilicate Glass 3.3	ISO 3585	ISO 3585
		Paint finish	75µ, RAL 5021	Epoxy coating	-
		PFA lining	ASTM D 3307		

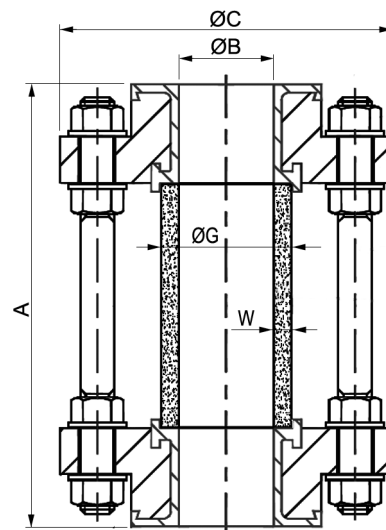


Pressure- / temperature diagram



Dimensions

Nominal size		Face to face [mm]	Bore [mm]	Flange diameter [mm]	Glass [mm]		Weight
ANSI 150 Piping systems							
Inches	mm	A	ØB	ØC	G	W	kg
1	25	152	20	110	30	4.5	3.7
1½	40	178	36	125	50	7.0	5.1
2	50	203	42	150	60	9.0	7.5
3	80	241	72	190	90	9.0	13.2
4	100	292	103	230	120	9.0	18.5
6	150	356	152	280	170	9.0	25.6
8	200	300		345	215	9.0	40.1
10	250	300		405	300	9.0	48.2
12	300	300		485	325	9.0	76.7
DIN PN 10/16 Piping systems							
Inches	mm	A	ØB	ØC	G	W	kg
1	25	160	20	115	30	4.5	3.8
1½	40	200	36	150	50	7.0	5.5
2	50	230	42	165	60	9.0	8.3
3	80	310	72	200	90	9.0	12.0
4	100	350	103	220	120	9.0	18.5
6	150	480	152	285	170	9.0	29.3
8	200	300		340	215	9.0	40.1
10	250	300		395/405	300	9.0	48.2
12	300	300		445/460	325	9.0	



Options

Component	Description
Flanges	Stainless steel
Shield	Perspex safety shield
Glass	Internally lined with FEP for caustic processes
Body	Flow disturbers and indicators, back lighting

Type code

CTSG	050	.	2	3	-	3PT	-	xx
①	②	③	④	⑤		⑥		

①	Type	CTSG	Tubular Pipeline Sightglass	
②	Nominal diameter	100 - 300	mm	
③	Working pressure	1	6 bar	DN 150 (6")
		2	10 bar	DN 25-100 (1" - 4")
④	Rating	3	PN 10/16	
		A	ANSI 150	
⑤	Flanges	3PT	Carbon Steel / PFA (standard)	
		4MT	Stainless steel / PFA	
⑥	Options	xx	Perspex safety shield Glass internally lined with FEP Flow disturbers and indicators, back lighting	