

B11 - Flanged heavy duty ball valve DN 15-150

Description

Ball valve PN 16/40 with flanged ends and two-piece body, full bore. Mounting flange for actuators according to ISO 5211. Antistatic and fire safe execution.

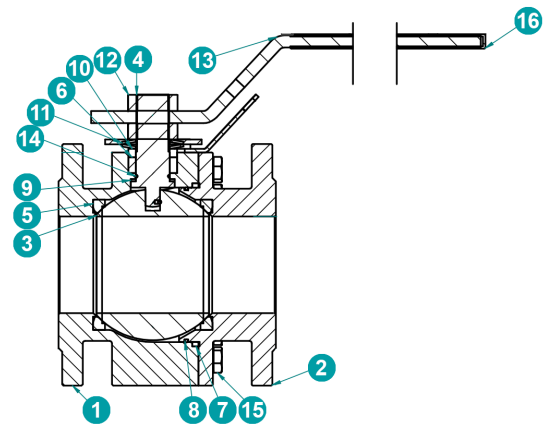
Product features

- Flange connection DN 15-50 flanges PN10/16/25/40
DN 65-150 flanges PN10/16
 - Face to face dimension DN 15-100 DIN 3202-F4 (short),
DN 125-150 DIN 3202-F5
Different F2F length available upon request.
 - Design According to API 6D-1745
 - Testing According to EN-12266
 - Max. working pressure 40 bar
 - Temperature range -50°C ÷ 200°C, versions for lower temperatures on request
 - Fire Safe execution According to BS 6755-2 and ISO 10479
 - Fugitive emission According to ISO 15848-1
- CE**
- The ball valves B11 meet the safety requirements of the Pressure Equipments Directive 2014/68/EU (PED) appendix 1 for fluids of the groups 1 and 2.
- ATEX Certified according to ATEX 2014/34/EU

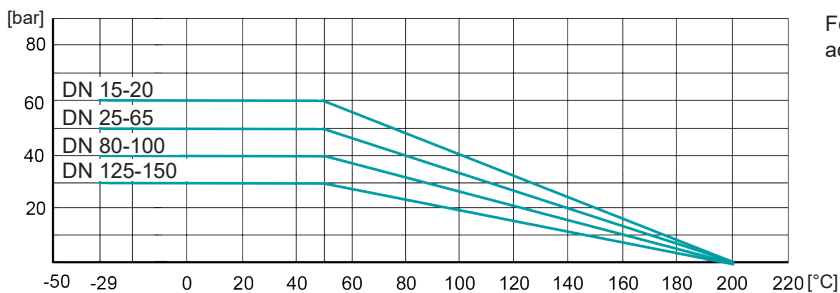


Construction

1	Two-piece body	AISI 316 / A105N
2	Bonnet	AISI 316 / A105N
3	Ball	AISI 316L
4	Stem	AISI 316L
5	Ball seat	PTFE
6	Steam seal	PTFE
7	Body seal	PTFE
8	O-ring	FVMQ
9	Washer	PTFE
10	Gland ring	AISI 316
11	Conical spring washer	AISI 316
12	Nut	AISI 316
13	Handle	AISI 316
14	O-ring	FVMQ
15	Bolt DIN 933	A4-70
16	Handle cover	PVC



Pressure / temperature diagram



For temperatures >100°C a mounting bracket with adapter is mounted between ball valve and actuator.

B11 - Flanged heavy duty ball valve DN 15-150

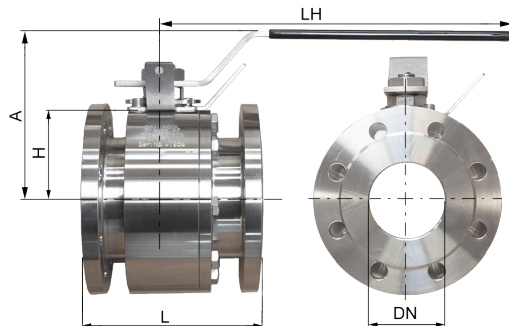
Type code

B11	22	F	K	. 025	. SS	T	-	..
1	2	3	4	5	6	7	-	8

1 Type	B11	Ball valve flanged type with ISO top flange	
2 Construction	22	2/2 ways, two-piece body	
3 Bore	F	Full bore	
4 Face to face dimension	K	F4 (short) standard DN 15-100, F5 DN 150	
	F	Upon request	
5 Size	015-150	DN 15-150	
	C	Body carbon steel	ASTM A150N
6 Materials body / ball	S	Body stainless steel	AISI 316
	S	Ball stainless steel	AISI 316L
	T	Seat ring	PTFE
7 Materials seat ring	T	Seat ring	PTFE
8 Special executions	+ MB	Bracket + coupling	

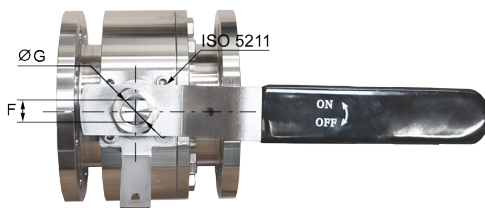
Other materials on request.

Dimensions



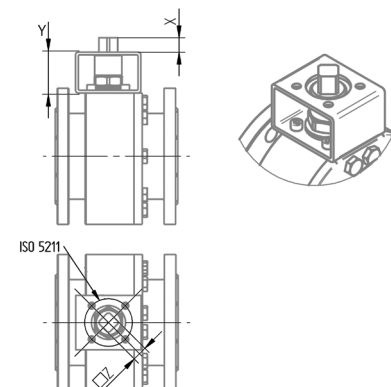
B1122FK face to face dim. DIN 3202 F4 (DN 15-100), F5 (DN 150)

	DN	L	A	H	LH	F	øG	ISO 5211	Torques [Nm]		[kg]
									PN16	PN40	
B1122FK.015.SST	15	115	92	35	160	8	12	F03	7	8	3,9
B1122FK.020.SST	20	120	104	41	160	8	12	F03	12	13	5,2
B1122FK.025.SST	25	125	118	50	175	10	16	F04	19	21	6,6
B1122FK.032.SST	32	130	122	59	210	10	16	F04	21	25	8,3
B1122FK.040.SST	40	140	127	61	210	10	16	F05	38	43	11,1
B1122FK.050.SST	50	150	156	72	275	14	22	F05	49	55	14,5
B1122FK.065.SST	65	170	165	86	275	14	22	F07	90	96	23,7
B1122FK.080.SST	80	180	190	93	370	19	27	F07	110	120	27,8
B1122FK.100.SST	100	190	200	105	370	19	27	F10	164	190	31
B1122FK.150.SST	150	350	287	158	700	30	42	F12	405	-	109



B1122FK with ISO 5211 bracket

	DN	X _{min}	Y	□Z	ISO 5211
B1122FK.015.SST	15	16	40	9x9	F03
B1122FK.020.SST	20	16	40	9x9	F03
B1122FK.025.SST	25	16	60	11x11	F04
B1122FK.032.SST	32	16	60	11x11	F04
B1122FK.040.SST	40	16	60	14x14	F05
B1122FK.050.SST	50	16	60	14x14	F05
B1122FK.065.SST	65	19	60	17x17	F07
B1122FK.080.SST	80	19	60	17x17	F07
B1122FK.100.SST	100	19	60	17x17	F07
B1122FK.150.SST	150	29	80	27x27	F12



The technical data are noncommittal and do not assure you of any properties. Please refer to our general sales conditions. Modifications without notice.

© 2024 InterApp AG, all rights reserved