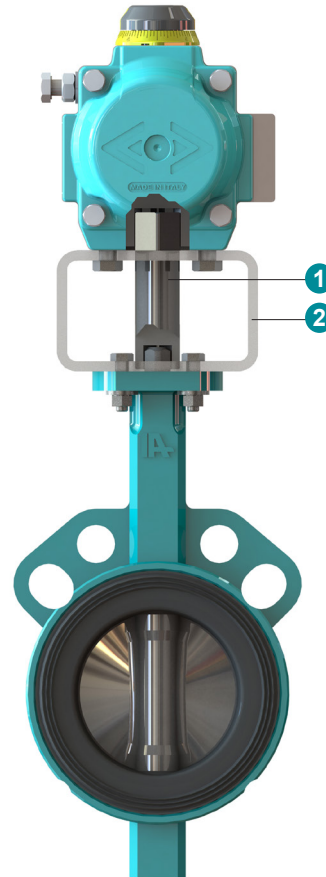
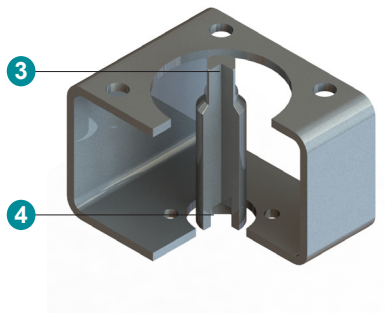


## Description

Mounting parts are used for assembling of actuators on valves when the actuators do not fit with the valve directly or to insulate the actuator from the valve.

## Construction

1	Coupling
2	Bracket
3	External square / round shaft with key
4	Internal square / bore with keyway



## Type code

MP . F05 11 . F07 17 - GALV  
 ①      ②      ③      ④      ⑤      ⑥

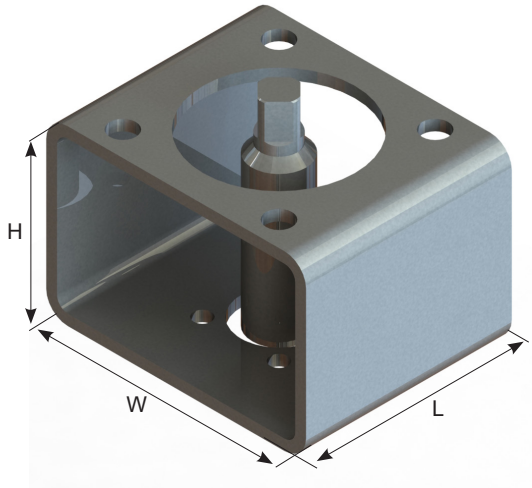
① Mounting parts	MP	Bracket and coupling	
② Flange valve side	F03 - F40	According to EN ISO 5211	
③ Shaft valve side (C1)	08	Internal square (IA standard)	DN 25 - 40
	09 - 36	Internal square (46- 75 on request) according to EN ISO 5211	DN 25 - 400
	45 - 130	Internal bore with keyway according to EN ISO 5211	DN 450 - 1600
④ Flange actuator side	F03 - F40	According to EN ISO 5211	
⑤ Shaft actuator side (C2)	08	External square	
	09 - 36	External square (46 - 75 on request) according to EN ISO 5211	
	45 - 130	External round shaft with key according to EN ISO 5211	
⑥ Material*	GALV	Carbon steel galvanised	
	SS304	Stainless steel AISI 304	
	SS316	Stainless steel AISI 316	

\* Material will apply to both bracket and coupling.

Other options upon request!

## Dimensions

### Bracket



Flange	L	W	H
F03	35	80	50
F04	45	80	50
F05	50	100	60
F07	70	100	60
F10	90	120	80
F12	110	160	80
F14	135	160	80
F16	160	200	100
F25	270	400	200
F30	320	400	200
F35	400	500	200
F40	450	500	200

The final size of bracket will be based on the largest flange size.

### Coupling

External square / actuator side



C1 / C2
8
9
11
14
17
22
27
36
46
55
75

Internal square bore / valve side

External round shaft with key / actuator side



C1 / C2
45
70
80
100
120
130

Internal round bore with keyway / valve side

### Note

---

---

---

---

---

---

---

---

---

---