

2/2 - Way Angle Seat Valves DN 8 - 80

Description

This Angle Seat Valve is composed of a 2/2-way angle seat valve body and a pneumatically operated piston actuator. It is suitable for shut off, dosing, control and regulating liquid or gaseous media.

Product features

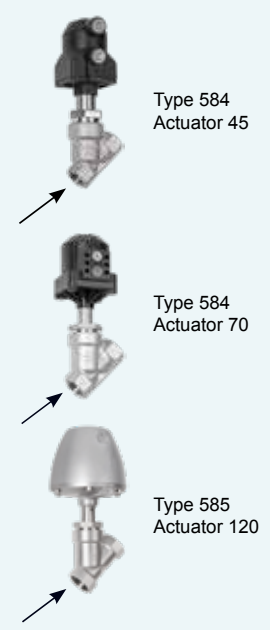
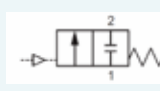
• Operating Medium	Neutral, aggressive, gaseous and liquid media.
• Viscosity	max. 600 mm ² /sec
• Medium Temperature	-10 to +180°C for PTFE sealing
• Working Pressure	see table
• Control Medium	max. +80°C
• Working Temperature	-10 to +90°C
• Size	DN 8-80
• Valve Body Material	see page 2-3
• Sealing	PTFE capsuled (NBR, FKM, EPDM on request)
• Filling Volume	Actuator 43, 45, 46 0,03 dm ³ Actuator 70/71 0,13 dm ³ Actuator 120 0,63 dm ³

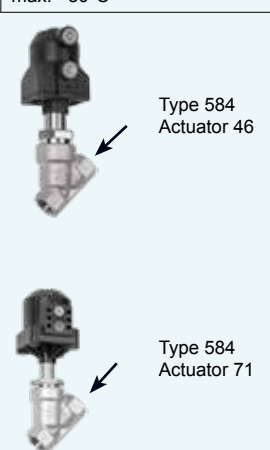
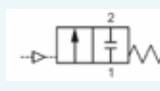
Excellence

- high flow rate
- 360° adjustable actuator orientation
- comprehensive modular accessories suitable for retrofitting after installation
- actuator options include normally closed, normally open or double acting
- variety of valve body end connections including threaded socket, butt weld and socket weld in different international standards, flanged ends and sanitary clamps




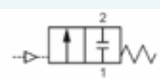
2/2 - Way Angle Seat Valves DN 8 - 80

2/2 way valve, pneumatically operated							
NC, DN15-DN65, threaded end							
for neutral, aggressive, gaseous and liquid media (*)					Actuator Control Function:		1 (normally closed NC)
flow below the seat					Medium Temperature:		-10 to +180°C (PTFE-sealing)
Body Material:		stainless steel, investment cast 1.4404 (316L)			Working Temperature:		-10 to 90°C
Sealing:		PTFE			Control Medium:		air, neutral gases
Viscosity:		max. 600mm ² /s			Temperature Control Medium:		max. +80°C
Control Function	Size	Article Number	Butt Weld	kV-Value (m ³ /h)	max. working pressure	Actuator type	
	DN 15	584.15.7.1.3.145	G1/2"	5,2	11,0	45	
		584.15.7.1.3.170			25,0	70	
	DN 20	584.20.7.1.3.145	G3/4"	10,0	6,0	45	
		585.20.7.1.3.1120			25,0	120	
	DN 25	584.25.7.1.3.145	G1"	15,0	2,5	45	
		584.25.7.1.3.170			10,0	70	
	DN 32	584.32.7.1.3.170	G1 1/4"	22,5	7,0	70	
		585.32.7.1.3.1120			16,0	120	
	DN 40	584.40.7.1.3.170	G1 1/2"	40,0	4,5	70	
		585.40.7.1.3.1120			16,0	120	
	DN 50	584.50.7.1.3.170	G2	72,0	3,0	70	
		585.50.7.1.3.1120			10,0	120	
	DN 65	585.65.7.1.3.1120	G2 1/2"	105,0	7,0	120	

2/2 way valves, pneumatically operated							
NC, DN15-DN65, threaded end							
for neutral, aggressive and gaseous media (*)					Actuator Control Function:		1 (normally closed NC)
flow above the seat (limited extent for liquid media)					Medium Temperature:		-10 bis +180°C (PTFE-sealing)
Body Material:		stainless steel, investment cast 1.4404 (316L)			Working Temperature:		-10 bis 90°C
Sealing:		PTFE			Control Medium:		air, neutral gases
Viscosity:		max. 600mm ² /s			Temperature Control Medium:		max. +80°C
Control Function	Size	Article Number	Butt weld	kV-Values (m ³ /h)	max. working pressure	Actuator type	
	DN 15	584.15.7.1.3.146	G1/2"	5,2	10,0	46	
		584.15.7.1.3.171			10,0	71	
	DN 20	584.20.7.1.3.146	G3/4"	10,0	10,0	46	
		584.20.7.1.3.171			10,0	71	
	DN 25	584.25.7.1.3.146	G1"	15,0	10,0	46	
		584.25.7.1.3.171			10,0	71	
	DN 32	584.32.7.1.3.171	G1 1/4"	22,5	10,0	71	
	DN 40	584.25.7.1.3.145	G1 1/2"	40,0	10,0	71	
	DN50	584.25.7.1.3.145	G2"	72,0	10,0	71	

(*) limited extent for liquid media

2/2 - Way Angle Seat Valves DN 8 - 80

2/2 way valves, pneumatically operated						
NC, DN15-DN50, Butt weld end ISO 1127						
for neutral, aggressive, gaseous and liquide Media (*)				Actuator Control Function:		1 (normally closed NC)
flow below the seat				Medium Temperature:		-10 to +180°C (PTFE-sealing)
Body Material:		stainless steel, investment cast 1.4404 (316L)		Working Temperature:		-10 to 90°C
Sealing:		PTFE		Control Medium:		air, neutral gases
Viscosity:		max. 600mm ² /s		Temperature Control Medium:		max. +80°C
Control Function	Size	Article Number	KV-Value (m ³ /h)	max. working pressure	Actuator type	 <p>Type 584 Actuator 70</p>
	DN 15	584.15.7.40.3.145	5,2	11,0	45	
		584.15.7.40.3.170		25,0	70	
	DN 20	584.20.7.40.3.145	10,0	6,0	45	
		584.20.7.40.3.170		20,0	70	
	DN25	585.20.7.40.3.1120	15,0	25,0	120	
		584.25.7.40.3.145		2,5	45	
		584.25.7.40.3.170		10,0	70	
	DN32	585.25.7.40.3.1120	22,5	25,0	120	
		584.32.7.40.3.170		7,0	70	
		585.32.7.40.3.1120		16,0	120	
	DN40	584.40.7.40.3.170	40,0	4,5	70	
		585.40.7.40.3.1120		16,0	120	
	DN50	584.50.7.40.3.170	72,0	3,0	70	
		585.50.7.40.3.1120		10,0	120	

(*) Suitable for Media which are resistant to materials in contact with the medium.

Further Types

Control Function

NO normally open (control function 2)

DA double acting (control function 3)

Body Material

stainless steel, forged 1.4435(316L)

stainless steel, investment cast 1.4408

Further End Connections

Butt weld end DIN

Butt weld end DIN 11850 Series 2

Butt weld end ASTM 269 ASME BPE

Butt weld end SMS 3008

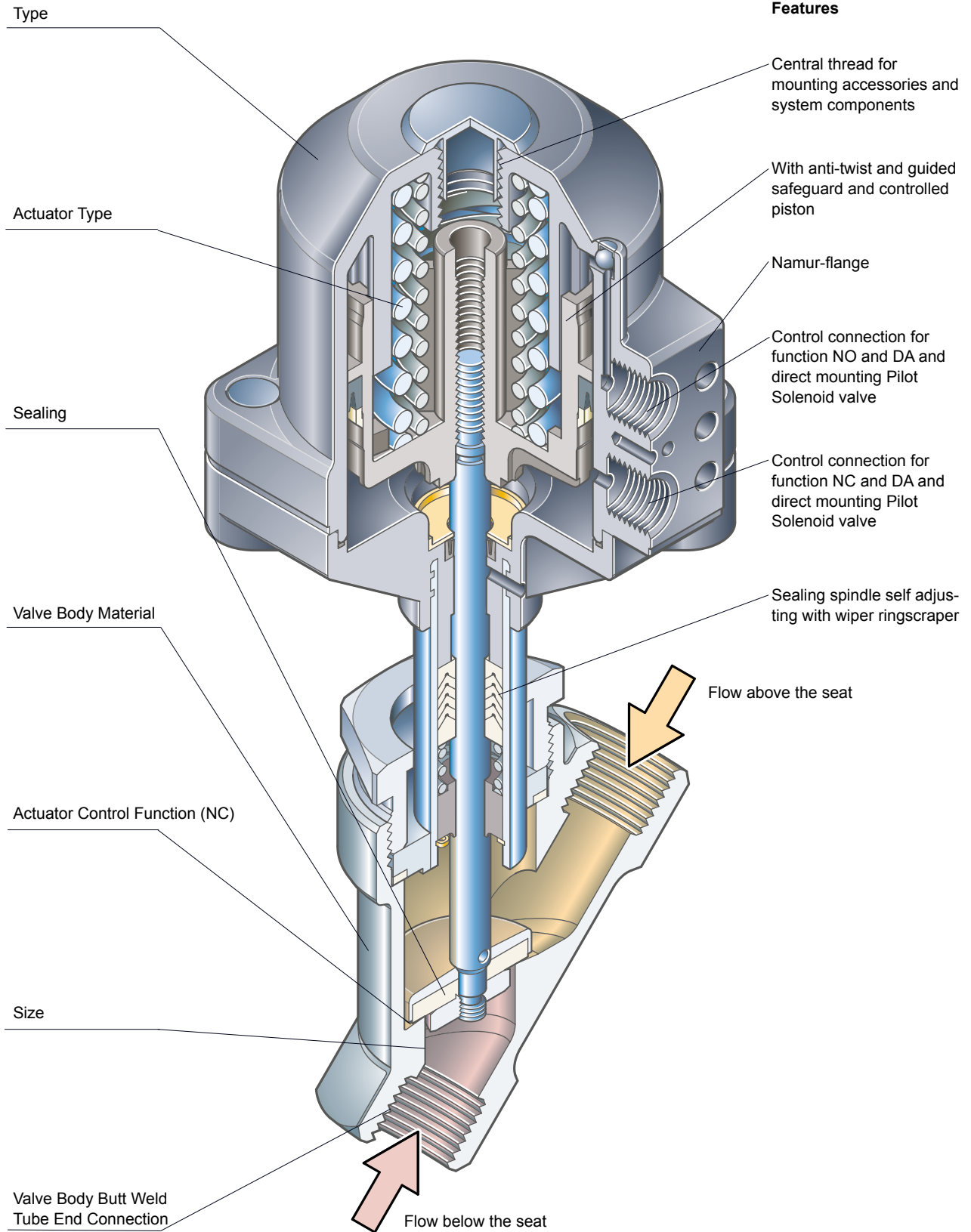
Butt weld end BS O.D. 4825

Clamp ISO 1127

Clamp DIN 32676

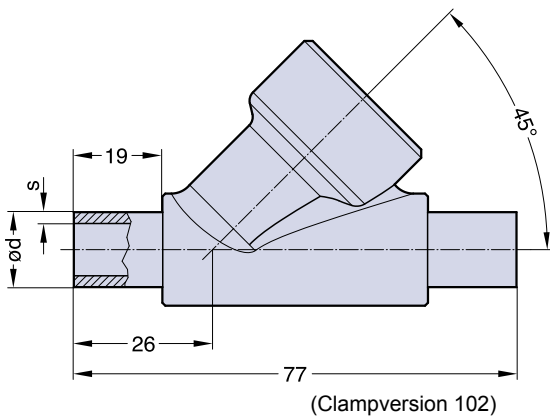
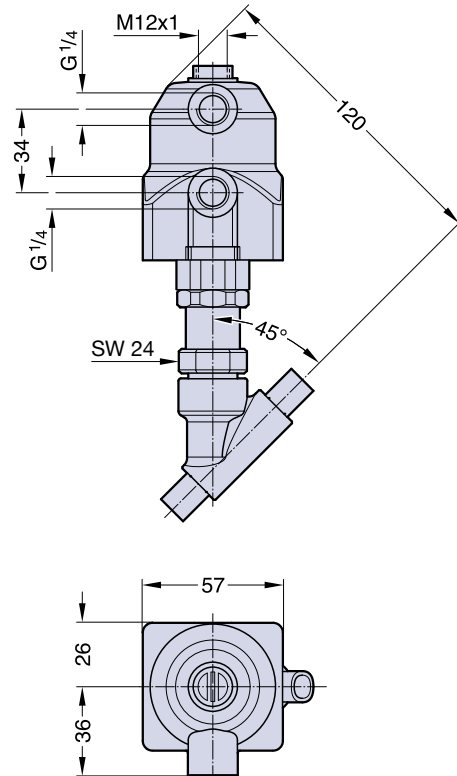
Clamp ASME/BPE

2/2 - Way Angle Seat Valves DN 8 - 80



2/2 - Way Angle Seat Valves DN 8 - 80

Type 584, Actuator 43

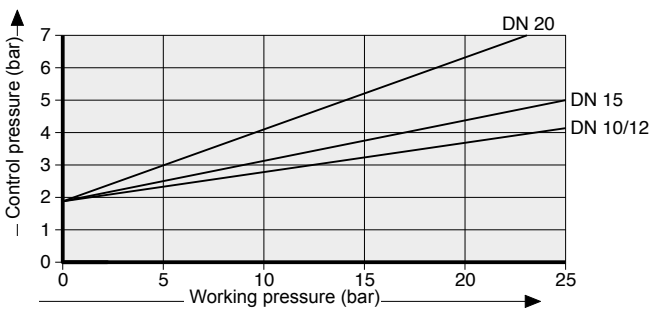


Butt Weld End [mm]
 Valve Body Material Forged Body 1.4435 (Code 77)
 Connection Code

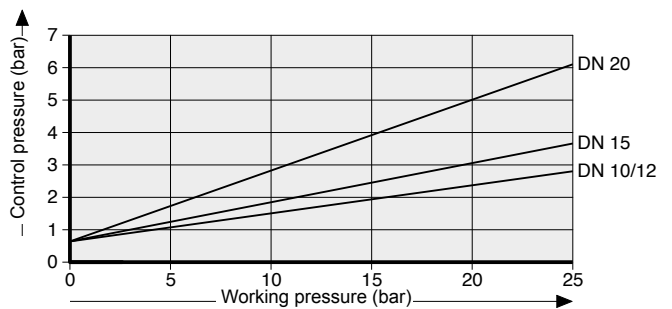
Selection Series Series 1 Series 2

Weight 0,7 kg, preferential standards in bold

Actuator 43 (NO), flow below the seat

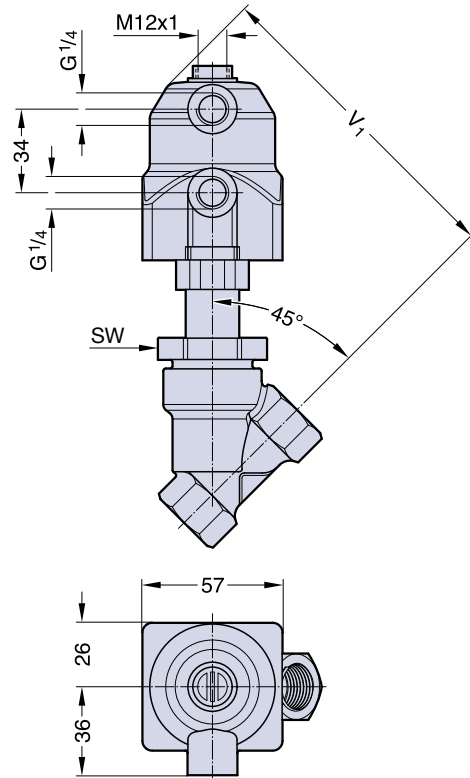


Actuator 43 (DA), flow below the seat

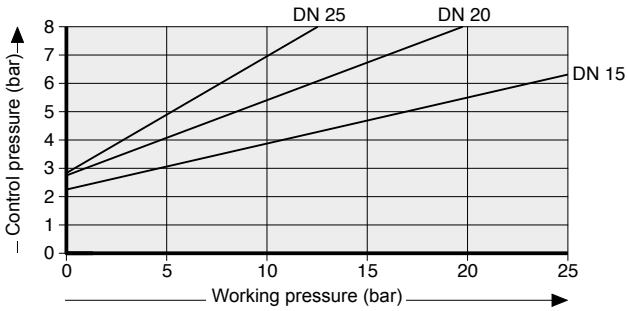


2/2 - Way Angle Seat Valves DN 8 - 80

Type 584, Actuator 45 and Actuator 46



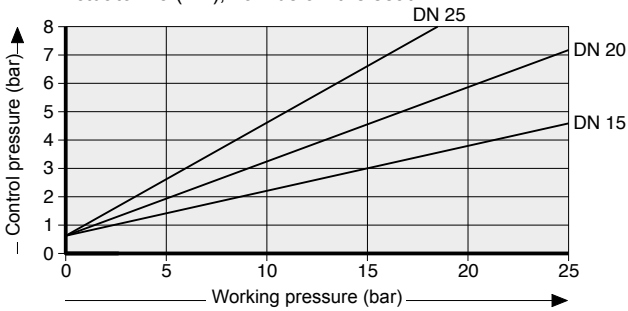
Actuator 45 (NO), flow below the seat



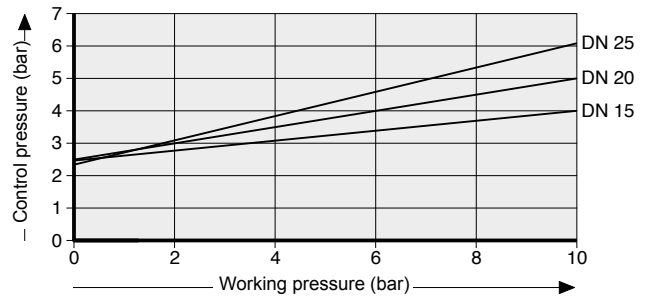
Measurement and weight table Actuator type 45 and 46
Weight

Valve body types and measurements see page 11-13

Actuator 45 (DA), flow below the seat



Actuator 46 (NC), flow below the seat

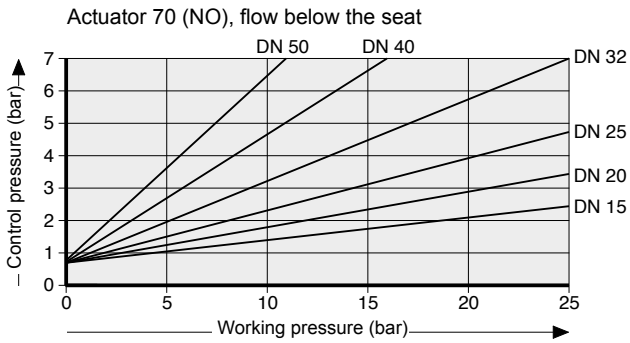
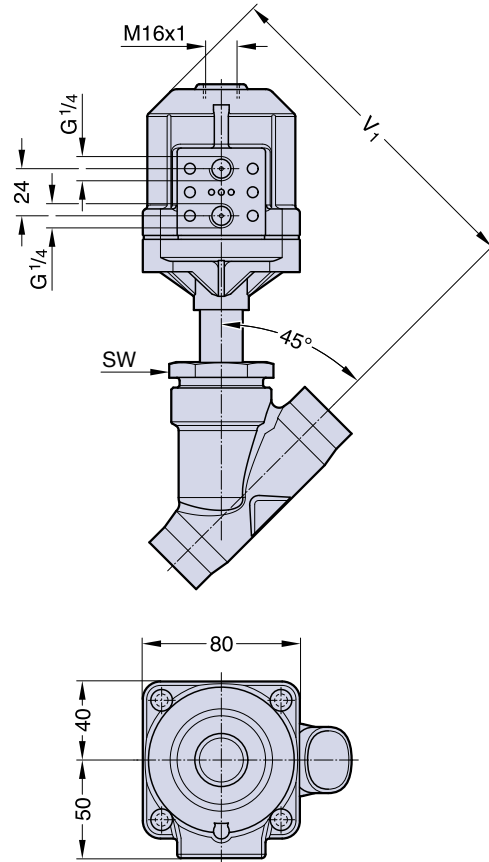


2/2 - Way Angle Seat Valves DN 8 - 80

Type 584, Actuator 70 and Actuator 71

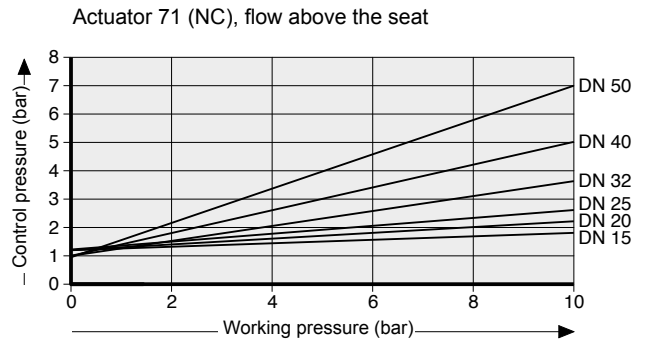
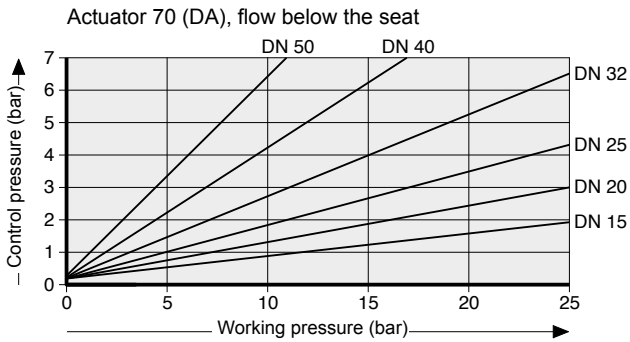


threaded bushing
for Namur-Flange
024.583.001



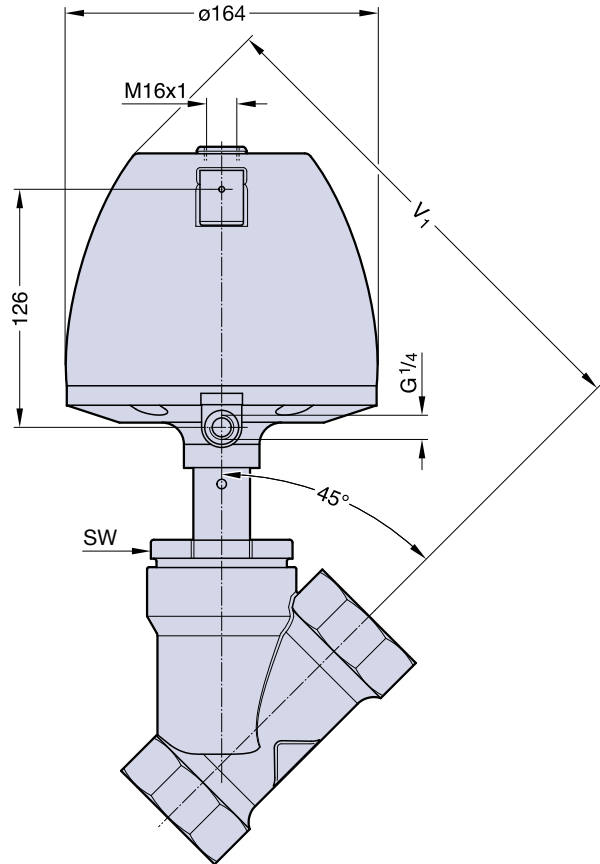
Measurement and weight table Actuator type 70 and 71
Weight

Valve body types and measurements see page 11-13



2/2 - Way Angle Seat Valves DN 8 - 80

Type 585, Actuator 120

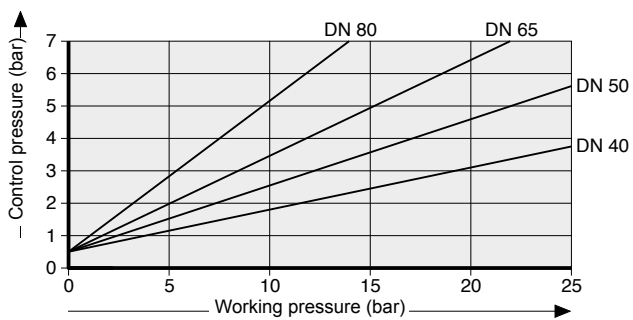


Measurement and weight table Actuator type 120

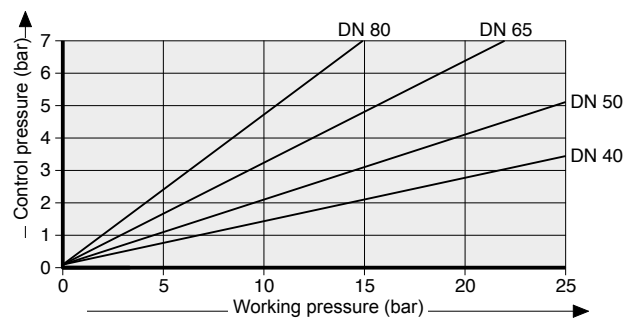
Weight

Valve body types and measurements see page 11-13

Actuator 120 (NO), flow below the seat



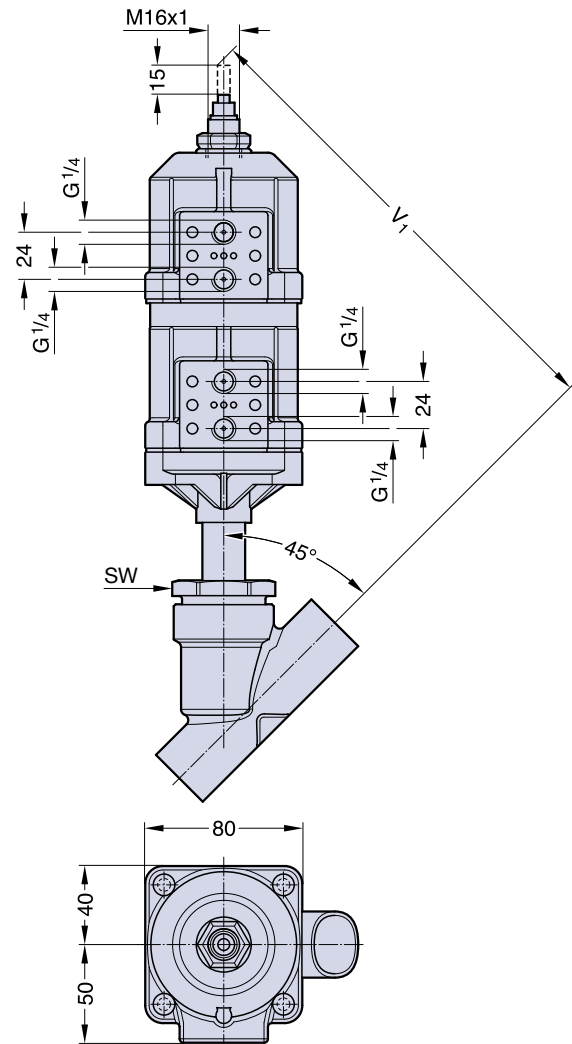
Actuator 120 (DA), flow below the seat



Type 590, Two Stage Actuator 70



Cap
024.17.001
optional



2/2-Way Angle Seat Valves with Two Stage Actuator

The pneumatically controlled two stage piston actuator is made of two plastic actuators. The two stages can be independently actuated from each other.

In order to open the valve completely with the full flowrate, the lower piston has to be actuated. Limited opening or flowrate is possible by actuating the upper piston.

An adjustable stroke limiter allows to adjust the linear movement of the upper piston. An optical indicator which is directly connected with the valve spindle shows the stroke.

The function of the valve is normally closed (function1).

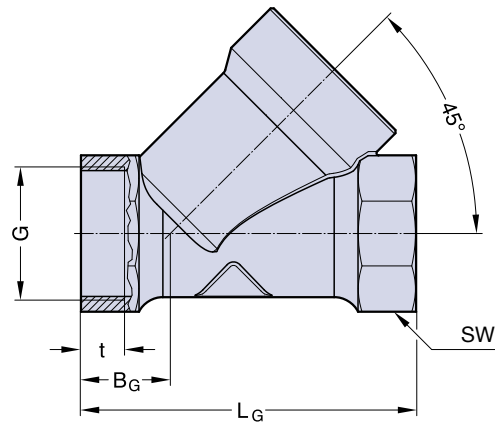
Application

The valve is mainly used for filling with controlled filling of a tank, container, or barrel. For filling, the valve is completely opened with the full flow rate. At the end of the filling cycle, the valve automatically reduces to the second stage of filling with a reduced flow rate for an accurate finish fill.

Type 590 Two Stage Valve DN 15-50
Measurement and weight table Actuator type 120

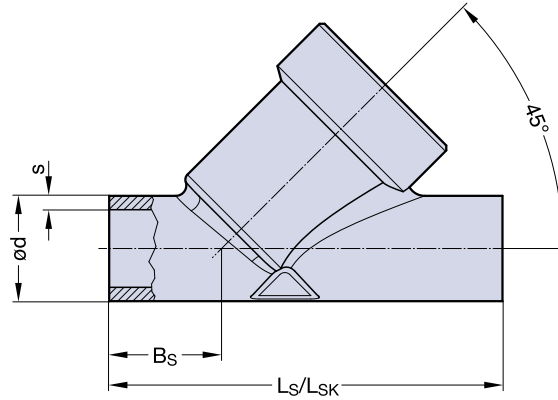
Weight

Valve Body Threaded Socket and Butt Weld End



Threaded Socket, Connection Code 1, Valve Body Material 1.4408 (Code 75)

Measurements in mm, G-Thread



Butt Weld End, Valve Body Material 1.4404/316L (Code 7)

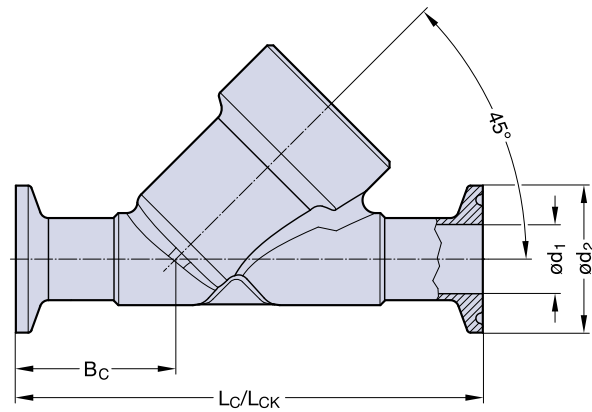
Connection Code

Selection Series Series 1 Series 2

L_{SK} = preferred standard for ISO 1127 Code 40K, other lengths on request, B_S valid for L_S
 Measurements in mm, preferential standards in bold

2/2 - Way Angle Seat Valves DN 8 - 80

Valve Body Clamp Socket and Flange



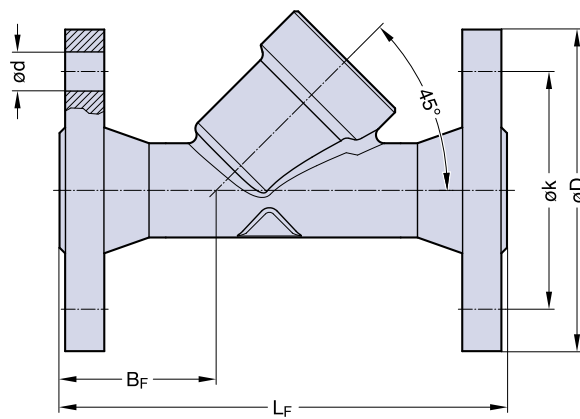
Clamp Socket, Valve Body Material 1.4404/316L (Code 7)

Connection-Code

Clamp End ident.
Tube End ident.

Similar

L_{CK} = preferred standard, B_C valid for L_C
Measurements in mm, NPS inch



Flange, Connection Code 51, Valve Body Material 1.4408 (Code 75)

number of drilling

Measurements in mm

2/2 - Way Angle Seat Valves DN 8 - 80

Manual Adjustments – Optical Indication



024.10
Optical position
indicator



024.11
Stroke limiter



024.12
Stroke limiter
with optical
position indicator



024.13
Manual override
with optical
position indicator



024.42
Manual override
with hand wheel

Electrical Switch Boxes – Manual Adjustments – Pilot Control

(if required, please ask for technical data sheets)



024.63-024.65
Control head switch
with optical indicator
024.89
AS-Interface



024.91-024.93
Control head switch



024.90
Limit switch, open position



00311.001
Proximity switch,
design as two-wire (Na-
mur) or three-wire (PNP)
for open-position or
with adapter for open-
close-position



MH 311 017
3/2-way Solenoid Valve
with hollow screw for single
mounting directly at the
pneumatic actuator